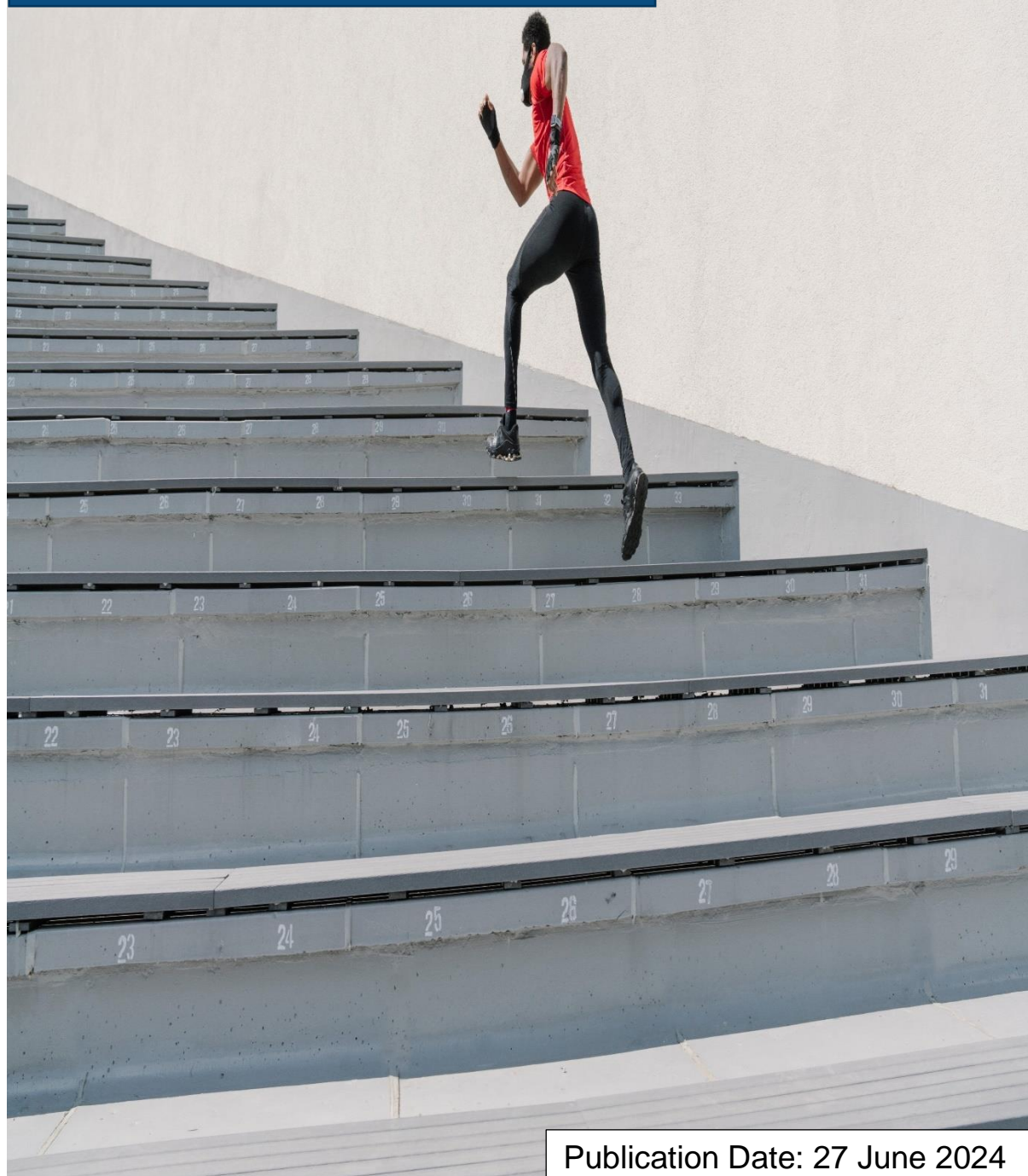


# FIL Holdings (UK) Limited

IFPR Disclosures  
31 December 2023



Publication Date: 27 June 2024

# Contents

<b>1. Introduction</b>	<b>4</b>
1.1 About this document	4
1.2 Regulatory context	4
1.3 FHL Background	4
1.4 Sustainability	5
1.5 Basis of preparation	5
1.6 Materiality	7
1.7 Frequency of disclosure	7
<b>2. Risk Management</b>	<b>8</b>
2.1 Risk management objectives and policies	8
2.2 Risk strategy	8
2.3 Risk governance	9
2.4 Risk aware culture	9
2.5 Risk identification and assessment	9
2.6 Risk mitigation and management	10
2.7 Risk reporting	10
<b>3. Risk Profile</b>	<b>11</b>
3.1 FHL's risk profile	11
3.2 Other risks	13
<b>4. Governance Structure</b>	<b>14</b>
4.1 FHL Board and committees	14
4.2 FHL Board membership	15
<b>5. Own Funds</b>	<b>17</b>
5.3 FHL Own Funds	17
5.4 FHL Own Funds Requirement	18
5.5 FHL K-factor requirement (KFR)	18
5.6 Approach to assessing the adequacy of Own Funds	19
<b>6. Remuneration Policy and Practices</b>	<b>20</b>
6.1 Background	20
6.2 Decision-making process	20
6.3 Remuneration committee and oversight	20
6.4 Pay and performance	20
6.5 Aggregate quantitative information on remuneration	21
6.6 Guaranteed variable remuneration and severance pay	21
<b>7. FIL Pensions Management (FPM)</b>	<b>22</b>
7.1 Background	22
7.2 Board Membership	22
7.3 Own Funds	22
7.4 Own Funds Requirement	23
7.5 K-factor requirement (KFR)	23
<b>8. Financial Administration Services Limited (FASL)</b>	<b>24</b>
8.1 Background	24
8.2 Board Membership	24
8.3 Own Funds	25
8.4 Own Funds Requirement	25

8.5	K-factor Requirement (KFR)	25
<b>9.</b>	<b>FIL Investments International (FII)</b>	<b>27</b>
9.1	Background	27
9.2	Board Membership	27
9.3	Own Funds	27
9.4	Own Funds Requirement	28
9.5	K-factor Requirement (KFR)	28
<b>10.</b>	<b>FIL Investment Advisors (UK) Limited (FIA)</b>	<b>29</b>
10.1	Background	29
10.2	Board Membership	29
10.3	Own Funds	29
10.4	Own Funds Requirement	30
10.5	K-factor Requirement (KFR)	30

# 1. Introduction

---

## 1.1 About this document

This document sets out public disclosures for FIL Holdings (UK) Limited (“FHL” or “the FHL Group”) and its MIFIDPRU subsidiaries and provides information on the FHL Group’s approach to management of risks and harms.

The disclosures in this document do not constitute any form of audited financial statements and have been produced solely for the purposes of meeting regulatory disclosure requirements. These disclosures focus on risk management activities at a corporate level and therefore, do not give any details of fund or product related risk management activities.

The disclosures have been reviewed and approved by the Directors of the FHL Group.

## 1.2 Regulatory context

The FHL Group is subject to the Investment Firms Prudential Regime (IFPR) which was introduced in the United Kingdom on 1 January 2022 and applies to the FHL Group and its subsidiaries.

As a UK based investment firm group, undertaking activities within the scope of the UK Markets in Financial Instruments Directive (“MIFID”), the FHL Group is subject to the rules and guidelines codified in the prudential sourcebook for MiFID investment firms, MIFIDPRU, which forms a part of the FCA Handbook. MIFIDPRU rules also apply to four regulated investment firm subsidiaries within the FHL Group: FIL Pensions Management (“FPM”), Financial Administration Services Limited (“FASL”), FIL Investments International (“FII”) and FIL Investment Advisors (UK) Limited (“FIA”), that were previously subject to the prudential sourcebook for Investment Firms, for Banks, Building Societies and Investment Firms and are referred to as MIFIDPRU investment firms. The remaining two regulated subsidiaries, FIL Investment Services (UK) Limited (“FISL”) and FIL Wealth Management Limited (“FWML”) are not subject to the MIFIDPRU rules. The FHL Group is categorised as a non-small and non-interconnected investment firm (non-SNI firm).

In accordance with the requirements of MIFIDPRU 8, the FHL Group is required to publish the disclosure documents for its regulated MIFIDPRU entities FASL, FPM, FII and FIA. All the regulated entities form a part of the FHL Group and follow the same policy for risk management, governance arrangements, and investment policy.

This document contains regulatory disclosures about the FHL Group and its four MIFIDPRU subsidiaries.

## 1.3 FHL Background

The FHL Group is a subsidiary of FIL Financial Services Holdings Limited (“FFSH”), a Bermuda registered company, which is also the parent company of FIL Life Insurance Limited (“FIL Life”) a fellow subsidiary in the UK. Its ultimate parent company is FIL Limited (“FIL Group”), a privately-owned company registered and domiciled in Bermuda. It is regulated by the Bermuda Monetary Authority and is required to prepare a capital adequacy assessment for the consolidated FIL Group.

FIL Group offers investment solutions and retirement expertise to institutions, individuals and their advisers around the world. It has the commitment and resources to provide the investment expertise, technology and service innovation needed to help its clients achieve their financial goals.

As part of its global investment and retirement savings business, the FHL Group serves a diverse range of clients, including pension funds, sovereign wealth funds, financial institutions, insurers, wealth managers and private individuals.

The FHL Group is a UK based financial holding company and does not undertake any regulated investment activities itself. Business of the FHL Group is conducted through the subsidiaries listed in section 1.5.

Within the FHL Group, there are no material deposit-taking, market-making or investment banking entities.

## 1.4 Sustainability

The FHL Group's purpose is to work together to build better financial futures for all its stakeholders: including clients, employees, and communities. The FHL Group incorporates sustainability into its business operations and investment process, working with investee companies to help them operate more sustainably in order to deliver those long-term returns and secure a better future for all.

FIL Group's Sustainable Investing Principles document details the sustainable investing framework, its approach to sustainable client solutions, exclusions, investment stewardship and engagement, and the integration of ESG risks and opportunities across the investment management process. Sustainability integration leads to better long-term financial, environmental, and social outcomes for clients and a broad set of stakeholders. The FHL Group integrates material sustainability considerations into its fundamental research as it believes it can drive better decisions and outcomes, which are integral to the financial futures of its clients. For further information, please [click here](#) to download the Sustainable Investing Principles document.

FIL Group's Corporate Sustainability Report (CSR) sets out the importance of sustainability for the Group across environment, workplace, suppliers, and the communities it operates in. It outlines the progress made towards the goals set and the ongoing efforts to make the Group a more sustainable organisation. For further information please click [here](#) to download a copy of the 2023 report.

In addition, the FHL Group's Task Force on Climate-related Financial Disclosures (TCFD) report aims to provide more transparency to stakeholders on key aspects of climate risks and opportunities including, but not limited to governance, strategy, and risk management as well as information on the metrics and targets used. For further information, please click [here](#) to download the 2023 report.

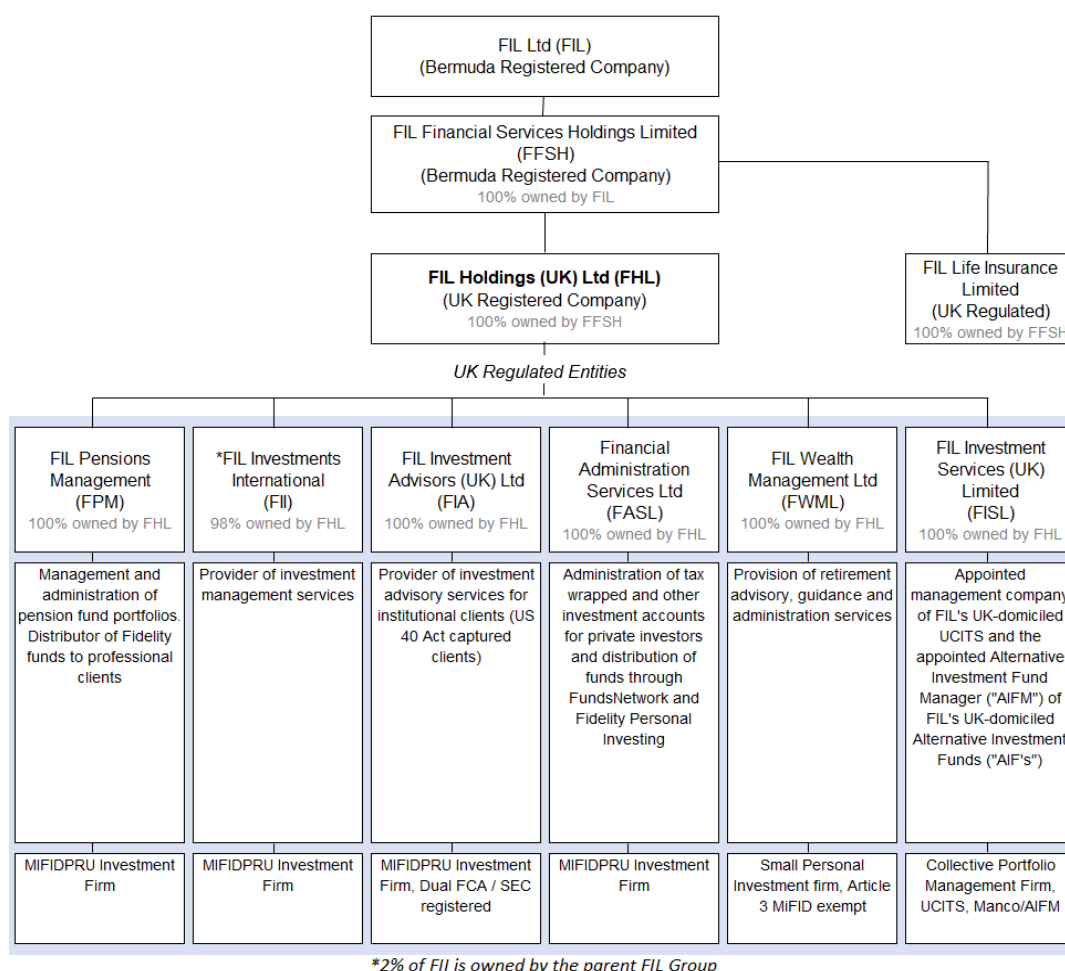
## 1.5 Basis of preparation

The disclosures included in this document relate to the FHL Group on a consolidated basis and for the MIFIDPRU subsidiaries on an individual basis. The FHL Group prepares its financial statements in accordance UK GAAP as at 31 December each year.

There is no current or foreseen material, practical or legal impediment to the prompt transfer of own funds or repayment of liabilities among the parent undertaking and its subsidiaries.

As at 31 December 2023, the FHL Group and each of its MIFIDPRU subsidiaries held Own Funds in excess of regulatory minimum capital requirements, Own Funds Requirements. The FHL Group comprises six regulated legal entities providing a range of financial services as illustrated in Figure 1.1 below:

**Figure 1.1: FCA Regulated Entities**

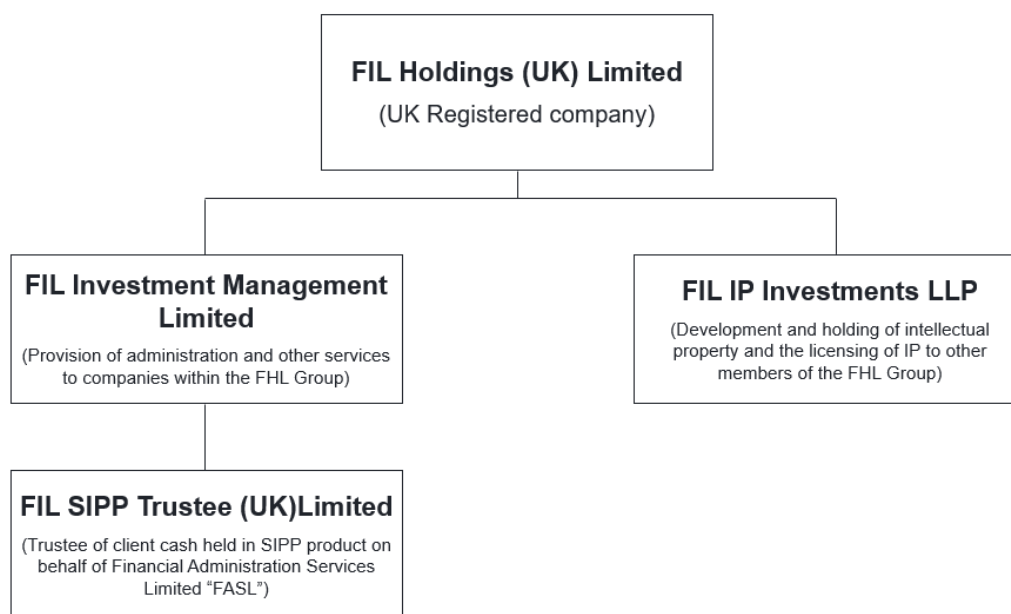


All the above companies are incorporated in England and Wales and are wholly owned by the FHL Group except for FIL Investments International (98% ownership) where the remaining 2% of shares are held by the wider FIL Group. None of the regulated sub entities have any principal subsidiaries under them.

FIL Life Insurance Limited ("FIL Life") is a separate UK company authorised by the Prudential Regulation Authority (PRA) and regulated by the FCA. FIL Life is wholly owned by FFSH (the parent company of the FHL Group) and falls outside of the FHL Group as illustrated in Figure 1.1. FIL Life is subject to separate Own Risk and Solvency Assessment and disclosure requirements. For further information please click [here](#) to download a copy of the document.

In addition to the regulated subsidiaries above, the FHL Group has four principal unregulated subsidiaries. A new legal entity named as FIL Platform Solutions (UK) Limited (FPSL) was established as an additional subsidiary of FHL on 21 July 2023. Unregulated subsidiary entities are shown in Figure 1.2 below:

**Figure 1.2: Unregulated Entities**



## 1.6 Materiality

Regulations permit the omission of one or more of the required disclosures, if that information is immaterial. A disclosure is deemed to be material if the omission of that information would likely change or influence the assessment or decision of a user relying on that information for the purposes of making economic decisions. Where a disclosure is considered to be immaterial, this has been stated.

## 1.7 Frequency of disclosure

These disclosures are required to be made on an annual basis, in line with relevant regulations. Certain disclosures are required to be made more frequently, if the business undergoes a significant change to its business model.

The FHL Group and its regulated entities have an accounting reference date of 31 December and disclosures are published within 6 months of that date.

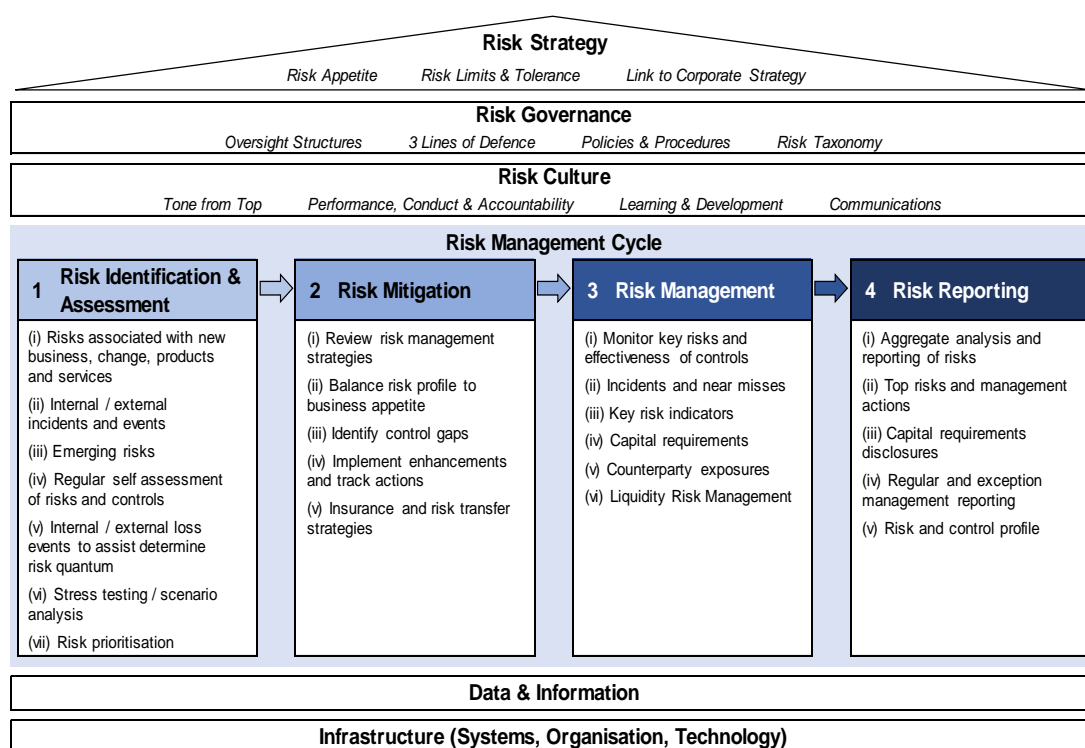
## 2. Risk Management

### 2.1 Risk management objectives and policies

Risk management process and requirements are defined across the FHL Group by the Enterprise Risk Management (ERM) framework. The framework supports the effective identification of risks, potential events and trends which may significantly affect the FHL Group's ability to achieve its strategic goals or maintain its operations and aligns to the FIL Group framework.

The ERM framework includes:

- the application of a common enterprise-wide risk management framework, activities and processes across the organisation.
- clear assignment of roles, responsibilities, and accountabilities for risk management.
- the effective use of appropriate risk identification, mitigation and management strategies.
- the integration of relevant, reliable and timely risk management information into reporting and decision-making processes.
- the identification and assessment of existing and uncertain future events that may influence the achievement of business plans and strategic objectives.



### 2.2 Risk strategy

The FHL Group's risk strategy is to ensure that effective risk management is embedded in all its core operating and decision-making processes, and that existing and emerging risks are identified and managed within acceptable risk limits for financial risks and risk tolerances for non-financial risks.

The FHL Group's risk strategy is supplemented by its risk appetite framework, including risk appetite statements and related metrics, which reflect the aggregated level of risk that the organisation is willing to assume or tolerate to achieve its business objectives.



The FHL Group's risk management framework includes both qualitative and quantitative monitoring of risk metrics, escalation processes and action management plans to ensure that the organisation remains within risk appetite statements, limits and tolerances.

The FHL Board and the Audit and Risk Committee (ARC) regularly review its performance against the risk appetite and approve all alterations or additions to the underlying risk appetite metrics.

## 2.3 Risk governance

The FHL Group is committed to the highest standard of corporate governance, business integrity and professionalism in all its activities.

The FHL Board is accountable for ensuring that appropriate governance structures and internal controls are implemented to comply with relevant rules, laws and regulations as well as FIL Group policies; and that these are consistent with protecting clients and customers and are in the long-term interests of FHL's shareholders.

The FHL Board is responsible for the supervision, leading and controlling of its subsidiaries. It is responsible for the implementation of the ERM framework and has created a governance structure to provide oversight and direction to the business through delegated authorities to designated committees as represented in Section 4. The committees inform the FHL Board of the risk profile and effectiveness of the risk management framework. The FHL Board receives matters escalated for consideration from subsidiary boards and committees.

The risk management structure at the FHL Group is designed on a 'Three Lines of Defence' basis to ensure clear accountabilities for all risk management activities in the organisation.

**The 1st Line of Defence** is formed of risk owners, owning all risks emerging from their respective businesses and/or processes and being accountable for managing, monitoring and mitigating these risks on an ongoing basis in line with established policies, tools and procedures.

**The 2nd Line of Defence**, which includes the Global Risk Team and individuals assigned to perform oversight responsibilities for specific risk types, comprises an independent risk and control layer responsible for the design of core enterprise and specific risk-type frameworks, methodologies, and tools, and provides risk oversight.

**The 3rd Line of Defence** is Internal Audit, which provides independent assurance on the adequacy of the design and effectiveness of systems and controls in the FHL Group.

The FHL Board has ultimate responsibility for risk management activities within the FHL Group in line with the MIFIDPRU and SYSC (Senior Management Arrangements, Systems and Controls) requirements.

## 2.4 Risk aware culture

The FHL Group has adopted an approach to promote, embed and measure a strong risk aware culture across the organisation, including reinforcing individual behaviours and capabilities that are aligned to the FIL Group's core values and beliefs. This approach also includes alignment of compensation and performance structures which incentivise risk accountability and the right risk behaviours.

## 2.5 Risk identification and assessment

The FHL Group's risk taxonomy provides a consistent approach for the classification, identification, and definition of risks. It covers all relevant risks across the organisation and aligns to the FIL Group's risk taxonomy.

As a part of risk management cycle, risk assessment is conducted to ensure understanding of risk levels, including materiality and impact. The risk assessment process includes identifying and

understanding root causes, materiality drivers, themes and impacts of individual and aggregated risks throughout the risk assessment process.

## **2.6 Risk mitigation and management**

Risk mitigation strategies are crucial for ensuring that residual risk levels are managed within risk appetite and include defined control environment, remediation processes, strategic de-risking of processes, risk transfer (insurance), disposal of assets or reduction of exposure, diversification, and collateral.

Risk Policy Owners are responsible for prescribing, monitoring and testing minimum control requirements aligned to the FHL Group's risk appetite for that risk-type. Risk owners are expected to meet the minimum control requirements and to develop and implement additional controls to appropriately manage their specific risks and risk levels.

## **2.7 Risk reporting**

On a regular basis, the FHL Board receives risk management information which includes but is not limited to:

- Risk profile, including top risks
- Risk appetite breaches
- Key risk and control indicators
- Material risk events or issues
- Regulatory and capital reporting

## 3. Risk Profile

### 3.1 FHL's risk profile

The FHL Board, through its established governance structure, monitors the FHL Group's risk profile continuously and receives formal reports concerning the material risks. These risks have been compared to the risk taxonomy and risk register to ensure that they continue to represent the most material risks facing the business.

The Table 3.1 below consists of the risks that the FHL Group is exposed to:

**Table 3.1: Key risks and risk types**

Key Risks	Risk Types
<b>Financial</b>	Counterparty / credit risk Market risk Liquidity risk Pension risk
<b>Operational</b>	Operational delivery risk Duties to customer risk Employment practices & workplace safety risks Regulatory risk Financial crime risk Financial reporting and tax compliance risk Information security risk Business process disruption risk Record & data management risk Privacy and data protection risk Technology failure risk Information security risk
<b>Investment</b>	Fund counterparty / credit risk Fund market risk Fund liquidity risk
<b>Strategic</b>	Market dynamics risk Business strategy risk Business performance risk, including fund performance Group risk Business concentration risk
<b>Environmental, Social &amp; Governance (ESG)</b>	Environmental and Climate risk Social risk Governance risk

**Financial risk** includes credit risk, market risk, liquidity risk and pension risks.

- **Counterparty/Credit risk** - the risk of a counterparty failing to meet their financial obligations when due.
- **Market risk** - the risk of an adverse financial impact due to changes in fair values of financial instruments from fluctuations in foreign currency exchange rates, interest rates, property prices and equity prices.
- **Liquidity risk** - the risk that the FHL Group either does not have available sufficient financial resources to enable it to meet its obligations as they fall due or can secure them only at excessive cost.

The FHL Group's policy is to maintain sufficient liquidity in each MIFIDPRU subsidiary to enable it to meet BAU and stressed liquidity requirements. Sufficient liquidity is also maintained at the FHL Group level to enable it to inject capital rapidly into subsidiaries to meet any unforeseen liquidity

requirements and scenarios. There are no significant regulatory or exchange control restrictions that would prevent this and the required currencies can generally be obtained either same day or the next business day. There are some limited restrictions on repatriating capital surpluses from subsidiaries back to the FHL Group.

- **Pension risk** - the risk that the liabilities of defined benefit pension plans are not fully funded, i.e., the binding provision of defined benefit pension scheme that could not be covered by corresponding assets or a shortfall in value of pension plans assets.

**Operational risk** is the risk of loss or poor outcomes for customers resulting from inadequate or failed internal processes, or harms arising from a lack of operational resilience. Risks arise from people, systems or external events. This covers a broad set of risks which includes:

- **Operational delivery** - Risks arising from the delivery of the FHL Group's business operations including failures in our customer and fund-level transactions e.g., transaction capture, those associated with the use of vendors and suppliers, unclear or untimely internal communication, fund accounting errors and change programme risks.
- **Duties to customers** - Risks arising from the failure to ensure fair, impartial and suitable treatment of customers, including unfair customer treatment, misleading customer communication and investment compliance breaches.
- **Financial crime** - Risks arising from internal and external financial crime, including bribery and corruption, fraud, money laundering and terrorist financing, embargos/sanctions and market abuse.
- **Information security** - Risks arising from losses of sensitive information, including cybersecurity, unauthorised and inappropriate access and information asset security.
- **Technology failure** - Risks arising from significant failures of technology.
- **Business disruption** - Risk of business disruption that adversely impacts the people and/or processes of the FHL Group, for example impacts due to property damage.

**Investment risk** arises in the investment funds managed by the FHL Group. It is borne by investors, provided the FHL Group manages the funds within limits and in line with investor expectations. The FHL Group actively manages communications and disclosures with investors to ensure that the risk profile of funds is transparent and understood by those who ultimately bear this type of risk. The risks are monitored through risk indicators to ensure that the funds are not exposed to significant credit or concentration risk with respect to their primary counterparties.

**Strategic risk** is the risk that the FHL Group cannot compete effectively, becomes unviable, or that the business strategy being pursued is inappropriate or incomplete. This includes risks related to market dynamics, business strategy and business performance. Typically, strategic risks affect the revenues and/or profitability of the FHL Group or result in opportunity costs which are not directly mitigated by capital.

**ESG Risk** is an environmental, social or governance factor or condition that can cause harm to the FHL Group as an organisation or assets managed by it on behalf of clients.

**Group risk** is the risk that the financial position of a firm may be adversely affected by its relationships, financial and non-financial, with other entities in the same group or by risk which may affect the financial position of the whole group e.g., reputational contagion. Whilst the FHL Group is a part of the wider FIL Group, it is financially independent from a capital and liquidity perspective. The FHL Group does not rely on other FIL Group entities for financial support, however, there is an option to request further investment or short-term funding from FIL Limited if necessary.

**Concentration risk** spans multiple risk categories and is the risk of large individual exposures and significant exposures to groups of counterparties whose likelihood of default is driven by common underlying factors (sector, economy, geography, location, instrument type). The FHL Group does not have significant concentrations of clients, fund strategies or balance sheet exposures, and the risk is

mitigated through credit exposures being diversified across a range of approved counterparties in accordance with agreed limits. Counterparty risk monitoring is performed on a daily basis.

### 3.2 Other risks

The following risks have also been considered and are not currently deemed material to the FHL Group:

**Residual risk** (a sub-category of credit risk) is the risk that recognised risk measurement and mitigation techniques used by the credit institution prove less effective than expected. This risk is not considered to be applicable, as the FHL Group does not have a loan book.

**Securitisation risk** is the risk that the capital resources held by the financial institution in respect of assets which it has securitised are inadequate with regards to the economic substance of the transaction, including the degree of risk transfer achieved.

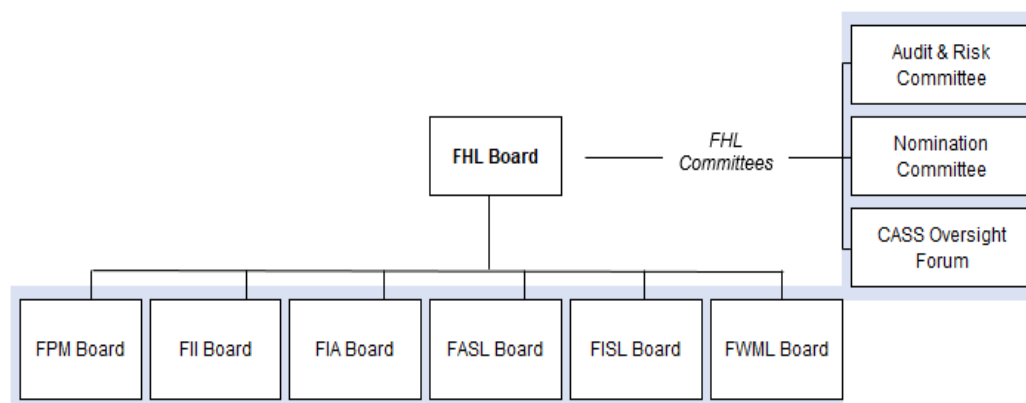
**Insurance risk** is the risk arising from the inherent uncertainties as to the occurrence, amount and timing of insurance liabilities, undertaking insurance business or providing underwriting services. The FHL Group does not undertake insurance business or otherwise provide underwriting services and so this risk is not applicable.

## 4. Governance Structure

### 4.1 FHL Board and committees

The structure of the FHL Board and its committees as at 31 December 2023 is shown in the Figure 4.1 below:

**Figure 4.1: FHL Board and its Committees:**



The FHL Board is responsible for setting the FHL Group’s strategy and risk appetite, maintaining an effective and efficient system of internal controls and monitoring business performance. The subsidiaries operate within this overall Group framework.

Delegations by the FHL Board to its Committees and Forum are fully documented in the respective Terms of Reference. The FHL Board has also adopted a formal schedule of matters reserved for Board approval that details key aspects of the company’s affairs that cannot be delegated.

The FHL Board meets on a quarterly basis with additional meetings scheduled, as required. The Board holds a strategy session at least annually to consider the overall UK strategy and key developments in the business, together with opportunities and the risks it faces.

The FHL Board delegates certain responsibilities to Board Committees and other forums, which assist the FHL Board in carrying out its functions and ensure that there is independent oversight of internal control and risk management. They are:

- FHL Audit and Risk Committee
- Nomination Committee
- CASS Oversight Forum

As a member of the FIL Group, oversight of certain activities is undertaken by dedicated committees at FIL Group level, for example, the Remuneration Committee. The FHL Board receives updates on key aspects of Group deliberations and policy that impact its business.

#### **FHL Audit and Risk Committee (“ARC”)**

The ARC is responsible for the oversight of risks and harms, and for providing independent and objective assurance to the FHL Board on the effectiveness of the FHL Group’s system of internal control, including financial, operational, compliance and risk management controls/matters. It recommends risk appetite to the FHL Board and monitors adherence to predefined levels. The ARC also oversees relevant regulatory, tax and legal issues, along with all other matters that the FHL Board deems relevant. It receives reports from Internal Audit, Compliance, Risk Management, Finance and the external auditors. The ARC membership is independent of line management,

comprising a non-independent non-executive director who is the Chairman and two independent non-executive directors. The UK heads of oversight functions (Internal Audit, Compliance and Risk), or their delegates, have standing invitations to the ARC. Where necessary, the FHL ARC escalates matters of note to the FHL Board and/or to the FIL ARC for consideration.

### **Nomination Committee**

The Nomination Committee is independent of line management and is chaired by the Chair of the FHL Board. The other members of the committee are the four independent non-executive directors. The Nomination Committee has been delegated oversight of a number of areas by the Board:

- Considering FHL and subsidiary Board composition and recommending appointments to the respective Boards for approval.
- Reviewing senior management succession plans to provide comfort to the FHL Board on their suitability; and
- Reviewing the appropriateness of the FIL Group remuneration policy for the FHL Group.

### **CASS Oversight Forum**

The CASS Oversight Forum is responsible for the governance, oversight and control of the FHL Group's client money and customer asset arrangements and associated control framework. The Forum meets formally on a monthly basis with provision to meet more frequently or as and when determined necessary, at the direction of the CASS Oversight Officer. The Forum is chaired by the CASS Oversight Officer with members and attendees from Banking Reconciliation and Control and the business areas that manage client money and assets, and other functions as required. Reporting is provided to the FHL ARC and all relevant CASS firms.

## **4.2 FHL Board membership**

The FHL Board is chaired by a non-executive Chairman and is responsible for setting the FHL Group's strategy and risk appetite, maintaining an effective and efficient system of internal controls and monitoring business performance. The subsidiaries operate within this overall Group framework.

In 2021, the FHL Board performed a self-assessment of its operating effectiveness which was separately shared with the FCA. A further review is scheduled to be undertaken during 2024.

As of 31 December 2023, the FHL Board comprised nine directors:

- A non-Executive Chairman
- A Chief Executive
- Two Non-Independent Non-Executive Directors
- Four Independent Non-Executive Directors
- A further Executive Director

A further Executive Director was appointed on 14 February 2024 to fill a vacancy that had arisen following an Executive Director leaving Fidelity during 2023.

The FHL Board believes that the promotion of diversity is key to delivering its long-term strategy and success. It recognises the benefits different skills profiles and experiences can bring and therefore, continuously strives to attract diverse talent to increase effectiveness. The Board recognises the value of diversity to the wider business and is a signatory to HM Treasury's 'Women in Finance Charter'.

The roles of the respective board members are set out below.

### **Chairman**

The FHL Board is chaired by a Non-Executive Director who is responsible for overseeing the implementation of Fidelity Group strategy as it applies to the UK entities.

### **Chief Executive**

The Chief Executive of the FHL Group is responsible for driving and implementing the strategy approved by the FHL Board.

### **Non-Executive Directors**

The FHL Board benefits from the knowledge and experience of two Non-Independent Non-Executive Directors of the FHL Group:

- The former Global Chief Investment Officer - Equities brings significant experience of the investment management business to Board deliberations. The Non-Executive Director is also Chair of the FIL and FIA Boards.
- The Global Head of Internal Audit who chairs the Audit and Risk Committee and who is deemed non-executive from a UK perspective.

### **Independent Non-Executive Directors**

The Independent Non-Executive Directors are responsible for constructively challenging and monitoring the management team in delivering the agreed strategy in line with agreed risk appetite limits approved by the FHL Board. The Independent Non-Executive Directors contribute to broad business knowledge, customer and risk experience and provide external insight to Board discussions, alongside independent and objective judgment.

### **Executive Directors**

The Executive Directors are responsible for key aspects of the running of the FHL Group, for example, operations and financial matters.

The FHL Board members are listed in the Table 4.1 below:

**Table 4.1: FHL Board members**

Name	Position	Directorships		
		FHL	FIL	Non-FIL
Peter Horrell	Chairman	3	1	0
Romain Boscher	Non-Executive Director	3	5	0
Michelle Cracknell	Independent Non-Executive Director	4	0	10
Mark Gotts	Non-Executive Director	1	0	0
Cara Hewitt	Executive Director	2	0	1
Tony Lanser	Executive Director	3	0	0
Patrick Olson	Independent Non-Executive Director	2	0	2
Teresa Robson-Capps	Independent Non-Executive Director	2	0	8
Alan Rubenstein	Independent Non-Executive Director	2	0	5

*Jill Holohan was appointed as an Executive Director on 14 February 2024.*



## 5. Own Funds

### 5.3 FHL Own Funds

MIFIDPRU 8 requires the FHL Group to disclose the composition of its Own Funds. The FHL Group's Own Funds consists entirely of Tier 1 Capital. Table 5.1 below discloses information on the detailed capital position of the FHL Group as of 31 December 2023:

**Table 5.1: Own Funds**

	Own Funds	31-Dec-23 (£'000)
1	OWN FUNDS	685,879
2	TIER 1 CAPITAL	896,362
3	COMMON EQUITY TIER 1 CAPITAL	896,362
4	Fully paid-up capital instruments	153,151
5	Share premium	36,075
6	Retained earnings	663,061
7	Accumulated other comprehensive income	
8	Other Reserves	44,075
9	Adjustment to CET1 due to prudential filters	
10	Other funds	
11	(-) Total deductions from CET1	(210,483)
12	CET1: Other capital elements, deductions and adjustments	-
13	ADDITIONAL TIER 1 CAPITAL	-
14	Fully paid up, directly issued capital instruments	-
15	Share premium	-
16	(-) TOTAL DEDUCTIONS FROM ADDITIONAL TIER 1 CAPITAL	-
17	Additional Tier 1: Other capital elements, deductions and adjustments	-
18	TIER 2 CAPITAL	-
19	Fully paid up, directly issued capital instruments	-
20	Share premium	-
21	(-) TOTAL DEDUCTIONS FROM TIER 2	-
22	Tier 2: Other capital elements, deductions and adjustments	-

As of 31 December 2023, the FHL Group had no additional Tier 1 capital or Tier 2 capital. The FHL Group had available own funds of £685.9m as of 31 December 2023.

MIFIDPRU 8 requires the FHL Group to reconcile its Own Funds to the balance sheet in the audited financial statements. Table 5.2 below provides the reconciliation as of 31 December 2023:

**Table 5.2: Reconciliation of Own Funds with Balance sheet**

Own Funds and Balance Sheet Reconciliation	31-Dec-23 (£'000)
<b>Assets - Breakdown by asset classes</b>	
Intangible assets	91,806
Tangible assets	82,242
Investments	3,666
Pension assets	577
Current assets	1,175,575
<b>Total Assets</b>	<b>1,353,866</b>
<b>Liabilities - Breakdown by liability classes</b>	
Creditors: amounts falling due after more than one year	187

<b>Own Funds and Balance Sheet Reconciliation</b>	<b>31-Dec-23 (£'000)</b>
Creditors: amounts falling due within one year	454,096
Provisions for liabilities	3,221
Pensions and similar obligations	-
<b>Total Liabilities</b>	<b>457,504</b>
<b>Net assets</b>	<b>896,362</b>
<b>Capital and reserves</b>	
Called up share capital	55,151
Share premium account	36,075
Capital contribution	98,000
Other reserve	44,075
Profit and loss account	663,061
<b>Total Shareholder's Equity</b>	<b>896,362</b>

#### 5.4 FHL Own Funds Requirement

The Own Funds Requirement is calculated as the highest of Permanent Minimum Capital Requirement (PMR), the Fixed Overheads Requirement (FOR) and the K-factor Requirement (KFR).

As at 31 December 2023, the FHL Group's Fixed Overhead Requirement of £215.6m establishes its Own Funds requirement, being higher than the base capital requirement and the total K-Factor requirement. The FHL Group held Own Funds in excess of its Own Funds Requirements. Table 5.3 provides the details of the Own Funds Requirements required to be held by the FHL Group:

**Table 5.3: Own Funds Requirements**

<b>Own Funds Requirement</b>	<b>31-Dec-23 (£'000)</b>
Permanent Minimum Requirement (PMR)	563
Fixed Overheads Requirement (FOR)	215,606
K-factor Requirement (KFR)	66,739
<b>Own funds requirement (Highest of PMR, FOR and KFR)</b>	<b>215,606</b>

#### 5.5 FHL K-factor requirement (KFR)

The K-factor requirement (KFR) is the minimum capital requirement based on FCA-prescribed quantitative indicators representing specific risks that investment firms pose to their clients, the markets in which they operate, or to themselves. Below are the K-factors relevant to the FHL Group and its MIFIDPRU subsidiaries:

- K-AUM (assets under management) addresses risks to clients resulting from the operation of asset management business.
- K-COH (client orders handled) addresses risks of harm to clients when providing the reception and transmission of client orders and execution of orders on behalf of clients.
- K-CMH (client money held) addresses the risk of potential harm where an investment firm holds money for its customers taking into account the legal arrangements in relation to asset segregation and irrespective of the national accounting regime applicable to client money.
- K-ASA (Assets Safeguarded and Administered) captures the risk of safeguarding and administering client assets and ensures that investment firms hold capital in proportion to such balances, regardless of whether they are on its own balance sheet or in third-party accounts.

The FHL Group has followed regulatory guidance in assessing the K-factor requirements, with the results shown in Table 5.4.

**Table 5.4: K Factor requirements**

<b>K-factor requirements</b>	<b>31-Dec-23 (£'000)</b>
K-ASA	30,501
K-AUM	24,625
K-CMH	6,206
<b>ΣK-AUM + K-CMH + K-ASA</b>	<b>61,332</b>
K-COH	5,407
<b>Total KFR</b>	<b>66,739</b>

## 5.6 Approach to assessing the adequacy of Own Funds

The FHL Group assesses the adequacy of Own Funds by conducting an Internal Capital Adequacy and Risk Assessment (ICARA), the overall purpose of which is to ensure that the FHL Group:

- a. has appropriate systems and controls in place to identify, monitor and where proportionate, reduce all potential harms that may result from the ongoing operations or winding down of the FHL Group's business or those of its individual MIFIDPRU investment firm subsidiaries; and
- b. holds adequate financial resources for the business that the FHL Group and its subsidiaries undertake.

The ICARA process is used to comply with Overall Financial Adequacy Rule (OFAR) to assess additional own funds above the Own Funds Requirements. The FHL Group is required to disclose its approach to assessing the own funds adequacy to meet OFAR. In line with the requirements laid out in MIFIDPRU rules, quantitative assessment is performed to determine the overall capital and liquid assets threshold requirement. This assessment is performed by calculating:

- a. Capital and liquid assets required to support ongoing operations; and
- b. Capital and liquid assets required to execute an orderly wind-down.

The ICARA assessment is performed for the FHL Group level and for the individual MIFIDPRU sub entities at a legal entity level. The result of the FHL Group's ICARA process are subject to periodic review by the FCA under the Supervisory Review and Evaluation Process (SREP).

## 6. Remuneration Policy and Practices

---

### 6.1 Background

This section sets out the remuneration related disclosures for the FHL Group. FIL Group is a private company owned by management and the founding family. The key employees are, from time to time, offered the opportunity to purchase A Shares out of their own post-tax monies, which helps to ensure strong alignment between shareholders and management interests and also inculcates a suitably long-term investment time horizon. Such shareholdings are generally retained throughout the individual's employment at FIL Group and are relatively illiquid. The Board of FIL Group believes that over the medium to long term most of the wealth creation of a key employee will be derived from the FIL Group shareholdings, rather than the components of remuneration covered by salary, benefits, bonus and other incentive plans. FIL Group operates a global remuneration policy, which applies to all employees across the Group. This document provides details of this remuneration policy and satisfies the remuneration disclosures for the year ended 31 December 2023.

The remuneration policies and practices of the FHL Group and its subsidiaries are governed by the IFPR rules. IFPR's remuneration code is based on the proportionality principle and the disclosure requirements are based on balance sheet assets of entities on a solo basis.

### 6.2 Decision-making process

The remuneration policy of the FHL Group is set at FIL Group level, in keeping with all Group policies and practices. Subsidiary company Boards, including FHL, have no formal responsibility for setting local remuneration policy, except as prescribed by local legal requirements.

### 6.3 Remuneration committee and oversight

FIL Group has established a Remuneration Committee. The committee has responsibility for taking a group-wide perspective on the principles and parameters of remuneration, and for oversight of the remuneration for specified senior executives.

The remuneration policy and compensation for individuals is set with an appropriate level of challenge and independence for a privately-owned asset management company.

Periodically, the FHL Group receives independent advice on technical executive remuneration issues. This advice is requested where they are believed to be better placed to give advice on specific issues.

FIL Board and senior management take full account of strategic objectives in setting the remuneration policy and are mindful of duties to shareholders and other stakeholders. In making decisions on remuneration, senior management seek to preserve shareholder value by ensuring the successful recruitment, retention and motivation of employees.

No individual is involved in decisions relating to his or her own remuneration.

### 6.4 Pay and performance

The FHL Group's remuneration is made up of fixed pay, i.e., salary and benefits, and performance-related pay which are designed to reflect performance against a range of quantitative and qualitative targets.

The remuneration package is structured in a way that the fixed element is sufficiently large to enable the company to operate a fully flexible and discretionary bonus policy.

The variable component is set in a manner which takes into account individual performance, performance of the individual's business unit and the overall performance of the business.

Staff performance is formally evaluated annually. The evaluations also consider the staff member's contribution in promoting sound and effective risk management where appropriate.

Gender neutrality is a core feature of our approach to remuneration, to support equal pay for our employees for equal work or work of equal value.

## 6.5 Aggregate quantitative information on remuneration

The FHL Group has undertaken 'quantitative' as well as 'qualitative' test of material risk-taking in drawing up a Remuneration Code Staff list for the FHL Group.

The FHL Group's Code Staff is a split between senior management and other members of staff whose actions have a material impact on the risk profile of the firm.

The FHL Group Code Staff employees have been identified as employees drawn from categories of staff including:

- Senior management and risk takers
- Staff engaged in control functions
- Key Function Heads

### Qualitative information disclosures

In line with IFPR requirements, the FHL Group has identified Material Risk Takers (MRTs), staff whose professional activities have a material impact on the risk of the FHL Group. A total of 23 MRTs were identified in accordance with SYSC 19G.5 for the financial year 2023 and the total remuneration of these is given in Table 6.1 below.

**Table 6.1: Total amount of remuneration awarded to MRTs**

	Senior Management (£'m)	Other MRTs (£'m)	Total (£'m)
Fixed Remuneration	1.38	1.46	2.84
Variable Remuneration	1.24	1.46	2.70
Total Remuneration	2.62	2.92	5.54
Total amount of deferred MRT remuneration awarded for previous performance years			
due to vest in current financial year <sup>1</sup>	0.76	1.09	1.85
due to vest in subsequent financial years <sup>2</sup>	0.76	1.23	1.99

1. Actual value delivered to MRT during 2023 from the vesting of prior year deferred variable compensation awards.

2. Value of outstanding awards not yet delivered to MRTs in 2023, based on estimate value as of 31 December 2023.

## 6.6 Guaranteed variable remuneration and severance pay

The variable remuneration programme is flexible to allow the firm to respond to changes in market conditions and to maintain its pay-for-performance approach. The FHL Group did not award any guaranteed variable remuneration during the financial year.

Additionally, no severance payment was awarded to the MRTs during the financial year.

## 7. FIL Pensions Management (FPM)

### 7.1 Background

FPM provides management and administration of pension fund portfolios. FPM is also the UK distributor for Fidelity's funds domiciled in the UK, Luxembourg and Ireland, in addition to Fidelity's Investment Trusts. It enters into portfolio management agreements with a wide variety of institutional clients, including pension funds, local authorities, insurers, charities and foundations. FPM is a distribution entity and delegates investment management to other FIL entities and Fidelity Institutional Asset Management (FIAM) in the US.

FPM has also entered into an agreement with FIL Life Insurance Limited (FIL Life) and provides all the administration services that underpin FIL Life offerings. These include open architecture workplace pension schemes and investment-only life fund platform services to third-party workplace pension providers.

### 7.2 Board Membership

The FPM Board is responsible for the implementation, management and oversight of the UK Institutional business strategy, Wholesale business strategy, operations and activities. It also provides administration services to FIL Life. As at 31 December 2023, the FPM Board comprised of a non-executive director and 3 executive directors. Table 7.1 below show the list of directors.

**Table 7.1: FPM Board Members**

Name	Position
Peter Horrell	Chairman and Non-Executive Director
Tony Lanser	Executive Director
Malcolm Palmer*	Executive Director
Charlie Wood	Executive Director
Dennis Pellerito	Executive Director

\*Malcolm Palmer resigned as an Executive director on 31 March 2024.

Jeff Harris was appointed as an Executive director on 09 April 2024.

### 7.3 Own Funds

MIFIDPRU 8 requires FPM to disclose its Own Funds. Table 7.2 below provides information on FPM's Own Funds as of 31 December 2023.

**Table 7.2: FPM Own Funds**

	Own Funds	31-Dec-23 (£'000)
1	OWN FUNDS	166,646
2	TIER 1 CAPITAL	156,646
3	COMMON EQUITY TIER 1 CAPITAL	156,646
4	Fully paid-up capital instruments	187,031
5	Share premium	-
6	Retained earnings	(30,385)
7	Accumulated other comprehensive income	-
8	Other Reserves	-
9	Adjustment to CET1 due to prudential filters	-
10	Other funds	-
11	(-) Total deductions from CET1	-
12	CET1: Other capital elements, deductions and adjustments	-
13	ADDITIONAL TIER 1 CAPITAL	-
14	Fully paid up, directly issued capital instruments	-

	Own Funds	31-Dec-23 (£'000)
15	Share premium	-
16	(-) TOTAL DEDUCTIONS FROM ADDITIONAL TIER 1 CAPITAL	-
17	Additional Tier 1: Other capital elements, deductions and adjustments	-
18	TIER 2 CAPITAL	10,000
19	Fully paid up, directly issued capital instruments	-
20	Share premium	-
21	(-) TOTAL DEDUCTIONS FROM TIER 2	-
22	Tier 2: Other capital elements, deductions and adjustments	-

FPM's Own Funds comprise of CET1 capital in the form of share capital, reserves and retained earnings. In addition, as of 31 December 2023, FPM held a Tier 2 capital of £10m.

#### 7.4 Own Funds Requirement

Own Funds Requirement of FPM is calculated the highest of Permanent Minimum Requirement, Fixed Overheads Requirement and K-factor Requirement. As at 31 December 2023, FPM's Fixed Overhead Requirement of £44.5m establishes its Own Funds Requirement, being higher than the permanent minimum requirement and K-Factor requirement.

**Table 7.3: FPM Own Funds Requirement**

Own Funds Requirement	31-Dec-23 (£'000)
Permanent Minimum Requirement (PMR)	150
Fixed Overheads Requirement (FOR)	44,533
K-factor Requirement (KFR)	4,915
<b>Own funds requirement (Highest of PMR, FOR and KFR)</b>	<b>44,533</b>

#### 7.5 K-factor requirement (KFR)

The K-factor requirement (KFR) is the minimum capital requirement based on FCA-prescribed quantitative indicators representing specific risks that investment firms pose to their clients, the markets in which they operate, or to themselves. FPM has followed regulatory guidance in assessing the K-factor requirements, with the results shown in table below.

**Table 7.4: FPM K-Factor Requirement**

K-factor Requirement	31-Dec-23 (£'000)
K-ASA	-
K-AUM	4,811
K-CMH	1
<b>∑K-AUM + K-CMH + K-ASA</b>	<b>4,812</b>
K-COH	103
<b>Total KFR</b>	<b>4,915</b>

## 8. Financial Administration Services Limited (FASL)

### 8.1 Background

FASL operates an open architecture retail investment platform including the associated provision of “tax wrapper” products such as Self Invested Personal Pensions (“SIPPs”) and Individual Savings Accounts (“ISAs”). The platform offers access to investment instruments, including Open Ended Investment Companies (OEICs), Investment Companies with Variable Capital domiciled in Ireland (“ICAVs”), Société d’Investissement à Capital Variable (“SICAVs”), Exchange traded funds (“ETFs”), Investment Trusts and listed companies.

The business is organised into two distinct channels:

- **Adviser Solutions** - Fidelity Adviser Solutions (FAS) is the adviser platform which provides investment funds and securities to financial advisers and their clients. This channel serves retail customers who have chosen to engage the services of an intermediary (usually a financial adviser and/or discretionary portfolio manager). As part of the service, a range of tools and reports are provided to help intermediaries improve their service to the end customer.
- **Personal Investing** - This channel services customers who have chosen to invest directly and manage their own investments. These clients are provided with a range of educational and guidance material and have access to focused restricted advice in relation to their retirement income options.

### 8.2 Board Membership

The FASL Board is responsible for the implementation, management and oversight of the UK Platform business strategy, operations and activities. It has adopted a formal schedule of matters reserved for Board approval that details key aspects of the company's affairs that cannot be delegated.

The FASL Board delegates certain responsibilities to standing Board committees, which assist the Board in carrying out its functions and ensure that there is independent oversight of internal control and risk management. The committees are as follows:

**The Asset Range Governance Committee (“ARGC”)** has been appointed by the Board to ensure that appropriate systems and controls are in place so that FASL discharges its duties under the FCA's Product Intervention and Product Governance rules and guidance to ensure that it acts in the best interests of clients when distributing investments.

The FASL board is chaired by an independent non-executive director. The FASL board comprise of 3 non-executive directors, one of which is an independent non-executive director, 3 executive directors.

Table 8.1 below shows the list of board members as at 31 December 2023:

**Table 8.1: FASL Board Members**

Name	Position
Alan Rubenstein	Chairman and Independent Non-Executive Director
Jacqueline Boylan	Executive Director
Stuart Welch*	Executive Director
Anne-Marie Brennan	Executive Director
Andrew Cole	Executive Director
Michelle Cracknell	Independent Non-Executive Director
Peter Horrell	Non-Executive Director

\*Stuart Welch resigned as an Executive Director on 31 December 2023.

Marianne Jaekel was appointed as an Executive Director on 18 April 2024.



### 8.3 Own Funds

MIFIDPRU 8 requires FASL to disclose its Own Funds. Table 8.2 below provides information on Own Funds as of 31 December 2023.

**Table 8.2: FASL Own Funds**

	Own Funds	31-Dec-23 (£'000)
1	OWN FUNDS	286,557
2	TIER 1 CAPITAL	369,877
3	COMMON EQUITY TIER 1 CAPITAL	369,877
4	Fully paid-up capital instruments	598,500
5	Share premium	-
6	Retained earnings	(228,623)
7	Accumulated other comprehensive income	-
8	Other Reserves	-
9	Adjustment to CET1 due to prudential filters	-
10	Other funds	-
11	(-) Total deductions from CET1	(91,320)
12	CET1: Other capital elements, deductions and adjustments	-
13	ADDITIONAL TIER 1 CAPITAL	-
14	Fully paid up, directly issued capital instruments	-
15	Share premium	-
16	(-) TOTAL DEDUCTIONS FROM ADDITIONAL TIER 1 CAPITAL	-
17	Additional Tier 1: Other capital elements, deductions and adjustments	-
18	TIER 2 CAPITAL	8,000
19	Fully paid up, directly issued capital instruments	-
20	Share premium	-
21	(-) TOTAL DEDUCTIONS FROM TIER 2	-
22	Tier 2: Other capital elements, deductions and adjustments	-

FASL own funds comprise of CET1 capital in the form of share capital, reserves and retained earnings. In addition, FPM held Tier 2 capital of £8m as of 31 December 2023.

### 8.4 Own Funds Requirement

Own Funds Requirement of FASL is calculated the highest of Permanent Minimum Requirement, Fixed Overheads Requirement and K-factor Requirement. As at 31 December 2023, FASL's Fixed Overhead Requirement of £56.8m establishes its Own Funds Requirement, being higher than the permanent minimum requirement and K-Factor requirement.

**Table 8.3: FASL Own Funds requirement**

Own Funds Requirement	31-Dec-23 (£'000)
Permanent Minimum Requirement (PMR)	150
Fixed Overheads Requirement (FOR)	56,754
K-factor Requirement (KFR)	36,887
<b>Own funds requirement (Highest of PMR, FOR and KFR)</b>	<b>56,754</b>

### 8.5 K-factor Requirement (KFR)

K-factor requirement (KFR) is the minimum capital requirement based on FCA-prescribed quantitative indicators representing specific risks that investment firms pose to their clients, the markets in which they operate, or to themselves. IFPR regulatory guidance has been followed in assessing the K-factor requirements, the results of which are shown in Table 8.4 below:

**Table 8.4: FASL K Factor Requirement**

<b>K-factor Requirement</b>	<b>31-Dec-23 (£'000)</b>
K-ASA	30,501
K-AUM	20
K-CMH	6,205
<b>ΣK-AUM + K-CMH + K-ASA</b>	<b>36,726</b>
K-COH	161
<b>Total KFR</b>	<b>36,887</b>

## 9. FIL Investments International (FIL)

### 9.1 Background

FIL is the principal investment manager for the FHL Group and covers a range of asset classes and multi-asset strategies. FIL is an appointed investment manager for a significant proportion of the FIL Group's collective investment products, including OEICs, SICAVs and a range of UK closed ended funds or Investment Trusts, for which FISL is the appointed Alternative Investment Fund Manager (AIFM).

### 9.2 Board Membership

The FIL Board is responsible for the implementation, management and oversight of the UK Investment Management business strategy, operations and activities. The Board consists of 3 executive directors and a non-executive director.

Table 9.1 below shows the list of board members as at 31 December 2023.

**Table 9.1: FIL Board Members**

Name	Position
Romain Boscher	Chairman and Non-Executive Director
Maria Abbonizio	Executive Director
Victoria Kelly	Executive Director
Andrew McCaffery	Chief Executive Officer
Malcolm Palmer*	Executive Director

\*Malcolm Palmer resigned as an Executive director of FIL on 31 March 2024.

### 9.3 Own Funds

MIFIDPRU 8 requires FIL to disclose its Own Funds. Table 9.2 below provides information on Own Funds as of 31 December 2023.

**Table 9.2: FIL Own Funds**

	Own Funds	31-Dec-23 (£'000)
1	OWN FUNDS	129,678
2	TIER 1 CAPITAL	177,343
3	COMMON EQUITY TIER 1 CAPITAL	177,343
4	Fully paid-up capital instruments	8,225
5	Share premium	2,222
6	Retained earnings	166,895
7	Accumulated other comprehensive income	-
8	Other Reserves	1
9	Adjustment to CET1 due to prudential filters	-
10	Other funds	-
11	(-) Total deductions from CET1	(47,665)
12	CET1: Other capital elements, deductions and adjustments	-
13	ADDITIONAL TIER 1 CAPITAL	-
14	Fully paid up, directly issued capital instruments	-
15	Share premium	-
16	(-) TOTAL DEDUCTIONS FROM ADDITIONAL TIER 1 CAPITAL	-
17	Additional Tier 1: Other capital elements, deductions and adjustments	-
18	TIER 2 CAPITAL	-
19	Fully paid up, directly issued capital instruments	-
20	Share premium	-

	Own Funds	31-Dec-23 (£'000)
21	(-) TOTAL DEDUCTIONS FROM TIER 2	-
22	Tier 2: Other capital elements, deductions and adjustments	-

#### 9.4 Own Funds Requirement

Own Funds Requirement of FII is calculated the highest of Permanent Minimum Requirement, Fixed Overheads Requirement and K-factor Requirement. As at 31 December 2023, FII's Fixed Overhead Requirement of £51m establishes its Own Funds Requirement, being higher than the permanent minimum requirement and K-Factor requirement.

**Table 9.3: FII Own Funds requirements**

Own Funds Requirement	31-Dec-23 (£'000)
Permanent Minimum Requirement (PMR)	75
Fixed Overheads Requirement (FOR)	51,001
K-factor Requirement (KFR)	23,878
<b>Own funds requirement (Highest of PMR, FOR and KFR)</b>	<b>51,001</b>

#### 9.5 K-factor Requirement (KFR)

K-factor requirement (KFR) is the minimum capital requirement based on FCA-prescribed quantitative indicators representing specific risks that investment firms pose to their clients, the markets in which they operate, or to themselves. IFPR regulatory guidance was followed for assessing the K-factor requirements, the results of which are shown in Table 9.4 below.

**Table 9.4: FII K Factor Requirement**

K-factor Requirement	31-Dec-23 (£'000)
K-ASA	-
K-AUM	18,736
K-CMH	-
<b>∑K-AUM + K-CMH + K-ASA</b>	<b>18,736</b>
K-COH	5,142
<b>Total KFR</b>	<b>23,878</b>

## 10. FIL Investment Advisors (UK) Limited (FIA)

### 10.1 Background

FIA is the provider of investment advisory services for the US based institutional clients. FIA forms a part of the FHL Group's investment management capability in the UK. It is a U.S. Securities and Exchange Commission (SEC) registered business that principally manages sub-delegated arrangements on behalf of several US-based investment managers.

### 10.2 Board Membership

The FIA Board is responsible for the implementation, management and oversight of the UK Investment Management business strategy, operations and activities. The Board consists of 3 executive directors and a non-executive director. Table 10.1 below shows the list of board members as at 31 December 2023.

**Table 10.1 FIA Board Members**

Name	Position
Romain Boscher	Chairman and Non-Executive Director
Maria Abbonizio	Executive Director
Victoria Kelly	Executive Director
Andrew McCaffery	Chief Executive Officer
Malcolm Palmer*	Executive Director

\*Malcolm Palmer resigned as a director of FIA on 31 March 2024.

### 10.3 Own Funds

MIFIDPRU 8 requires FIA to disclose its Own Funds. Table 10.2 below provides information on FIA's Own Funds as of 31 December 2023.

**Table 10.2: FIA Own Funds**

	Own Funds	31-Dec-23 (£'000)
1	OWN FUNDS	7,070
2	TIER 1 CAPITAL	7,923
3	COMMON EQUITY TIER 1 CAPITAL	7,923
4	Fully paid-up capital instruments	2,042
5	Share premium	1,135
6	Retained earnings	4,746
7	Accumulated other comprehensive income	-
8	Other Reserves	-
9	Adjustment to CET1 due to prudential filters	-
10	Other funds	-
11	(-) Total deductions from CET1	(853)
12	CET1: Other capital elements, deductions and adjustments	-
13	ADDITIONAL TIER 1 CAPITAL	-
14	Fully paid up, directly issued capital instruments	-
15	Share premium	-
16	(-) TOTAL DEDUCTIONS FROM ADDITIONAL TIER 1 CAPITAL	-
17	Additional Tier 1: Other capital elements, deductions and adjustments	-
18	TIER 2 CAPITAL	-
19	Fully paid up, directly issued capital instruments	-
20	Share premium	-
21	(-) TOTAL DEDUCTIONS FROM TIER 2	-

	Own Funds	31-Dec-23 (£'000)
22	Tier 2: Other capital elements, deductions and adjustments	-

#### 10.4 Own Funds Requirement

Own Funds Requirement of FIA is calculated the highest of Permanent Minimum Requirement, Fixed Overheads Requirement and K-factor Requirement. As at 31 December 2023, FIA's Fixed Overhead Requirement of £1.3m establishes its Own Funds Requirement, being higher than the permanent minimum requirement and K-Factor requirement.

**Table 10.3: FIA Own Funds requirements**

Own Funds Requirement	31-Dec-23 (£'000)
Permanent Minimum Requirement (PMR)	75
Fixed Overheads Requirement (FOR)	1,288
K-factor Requirement (KFR)	1,058
<b>Own funds requirement (Highest of PMR, FOR and KFR)</b>	<b>1,288</b>

#### 10.5 K-factor Requirement (KFR)

K-factor requirement (KFR) is the minimum capital requirement based on FCA-prescribed quantitative indicators representing specific risks that investment firms pose to their clients, the markets in which they operate, or to themselves. IFPR regulatory guidance has been followed in assessing the K-factor requirements, the results of which are shown in table 10.4 below.

**Table 10.4: FIA K-Factor Requirement**

K-factor Requirement	31-Dec-23 (£'000)
K-ASA	-
K-AUM	1,058
K-CMH	-
<b>∑K-AUM + K-CMH + K-ASA</b>	<b>1,058</b>
K-COH	-
<b>Total KFR</b>	<b>1,058</b>